



Department of Recreation and Parks

An Overview

Department Mission Statement

- Provide quality active and passive recreation opportunities
- Provide accessible youth and adult programs
- Preserve and enhance natural, cultural and historic resources

Park System Highlights

Park Acreage and Agricultural Easements Under Our Management

- Over 12,470 Acres of Parkland and Natural Resource Areas
- Over 13,659 Acres of Agricultural Land Preserved Since 1980

Award Winning Park Facilities

- 137 Parks
- 33 Natural Areas
- 2 Swim Centers
- 2 Recreation Centers
- 3 Golf Courses
- 19 Canoe-Kayak Launches
- 2 County Owned Boat Ramps
- 23 Synthetic Turf Fields

Recreation and Athletic Programs and Participation

- 318,000 visitors per year at the North Arundel Aquatic Center and the Annapolis Swim Center
- 35,000 youth and adult participants in athletic programs each year
- 6,100 participants in summer camps and fun centers each year
- 41 child care centers serving 2,500 families
- 7,200 permits annually for DRP and Board of Education indoor and outdoor facilities
- 1.4 Million website hits per year

2017 Land Preservation Parks and Recreation Plan

- A Long Range Plan for Parkland Acquisition and Park Development
- Mandated by State Law for the County to receive Program Open Space Grants

LPPRP Three Primary Components

- Parks, Recreation and Open Space
- Agricultural Land Preservation
- Natural Resource Land Conservation

Other Components

- Detailed inventory of Land and Facilities
- Status of Small Area Plan recommendations
- Supply and demand analysis based on citizen surveys, public comments, demographic data and participation data
- Record of all public comments

Public Outreach and Community Involvement

- On-line Citizen Survey (2,442 respondents)
- Work Sessions with the Bicycle Advisory Commission, Water Access Commission and County athletic associations
- Year-round collaboration with Land Trusts, River Keepers, River Associations, and Maryland Agricultural Land Preservation Foundation
- Collaboration with the City of Annapolis
- On-line post of the draft plan for public comments (75 days)
- Over 300 comments received and reviewed
- Based on a comparison to the 2013 LPPRP, our on-line survey and plan review process delivered far greater public input than the 2013 public meetings

Citizen Survey Highlights

Most Heavily Used Facilities

- Paved Trails
- Regional Parks
- Beach Parks
- Swim Centers

Public Demand Based on Survey

Tier One:

- Trails
- Water Access
- Nature Centers
- Dog Parks
- Fishing Piers
- Swimming Beaches
- Tennis (indoor)
- Dog Beach
- Tennis (outdoor)
- Mountain Bike Trails

Tier Two:

- Gardens and landscape features
- Restrooms at parks and facilities
- ADA Facilities
- Water Park with slides
- Indoor gyms
- Open play fields
- Playgrounds
- Athletic Fields
- Picnic Areas

Draft Plan Public Comments

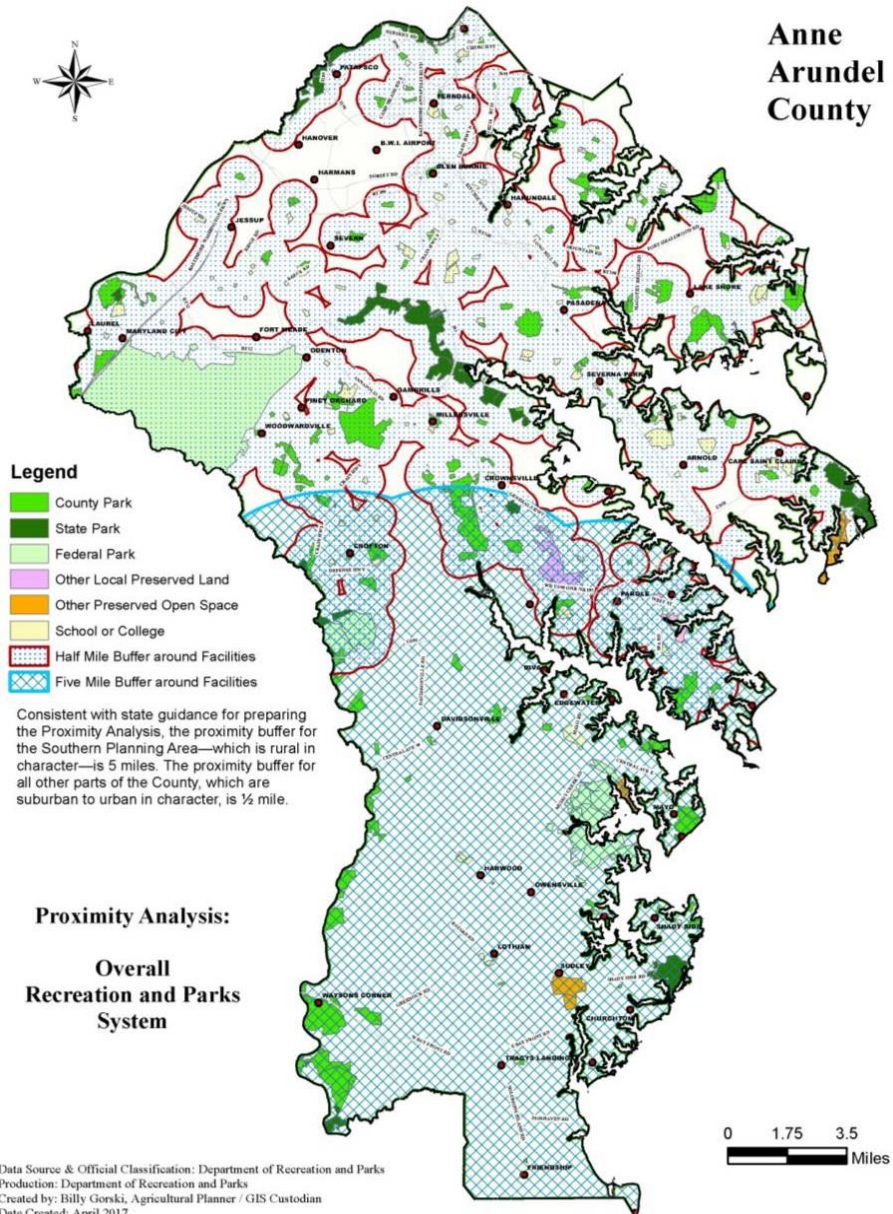
Over 320 public comments were received with high demand for the following:

- Ice Rinks
- Tennis (Indoor)
- Water Access
- Track and Field
- Swimming Pools
- Recreation Centers
- Land Preservation
- Trails

Proximity Analysis

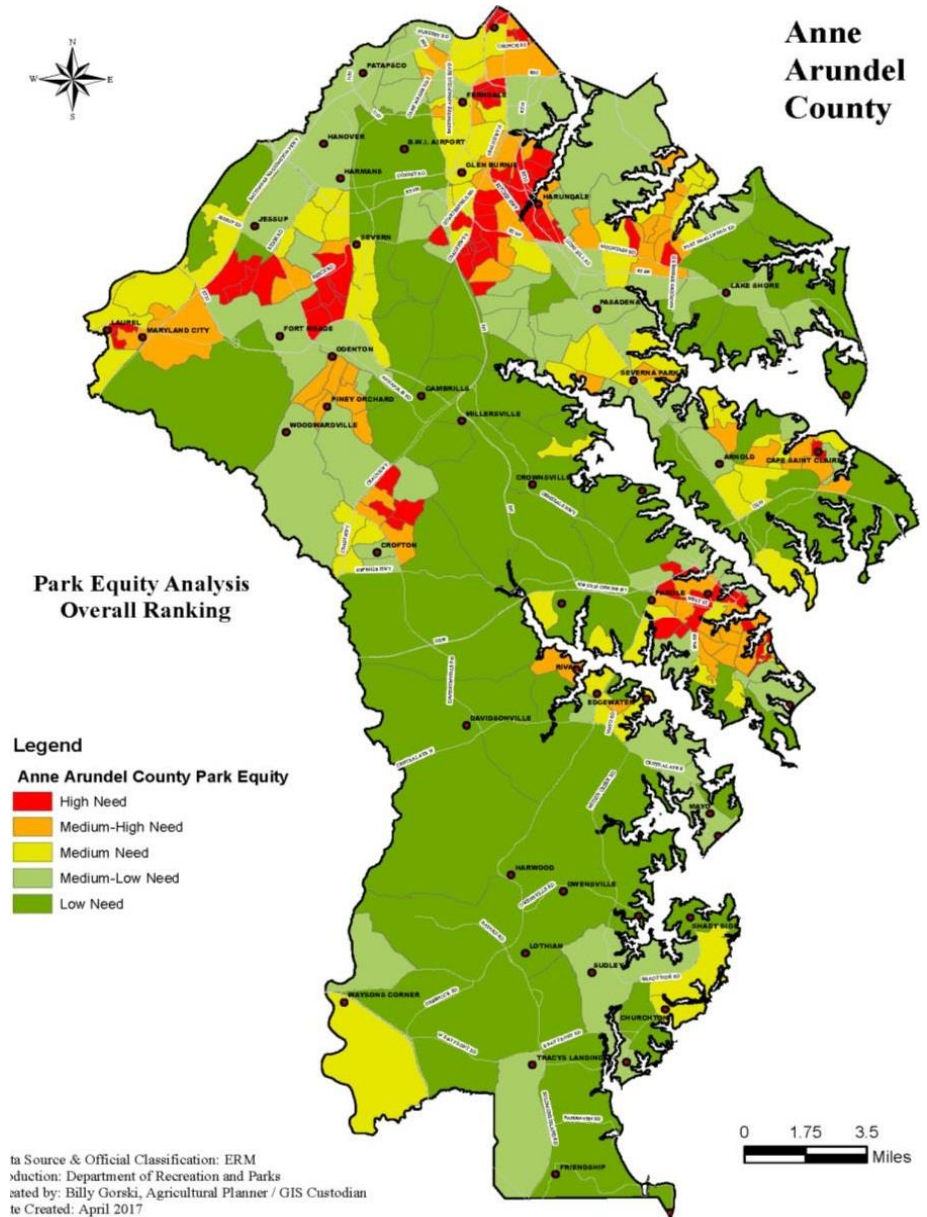
- Substantial portion of County within ½ mile of park or recreation facility
- Notable overall gaps: North of Ft. Meade, Hanover/Harmans
- Most of County within 5 miles of water access and regional trails
- Clustering of fields and indoor facilities leaves gaps in Northern and Western planning areas

Anne Arundel County

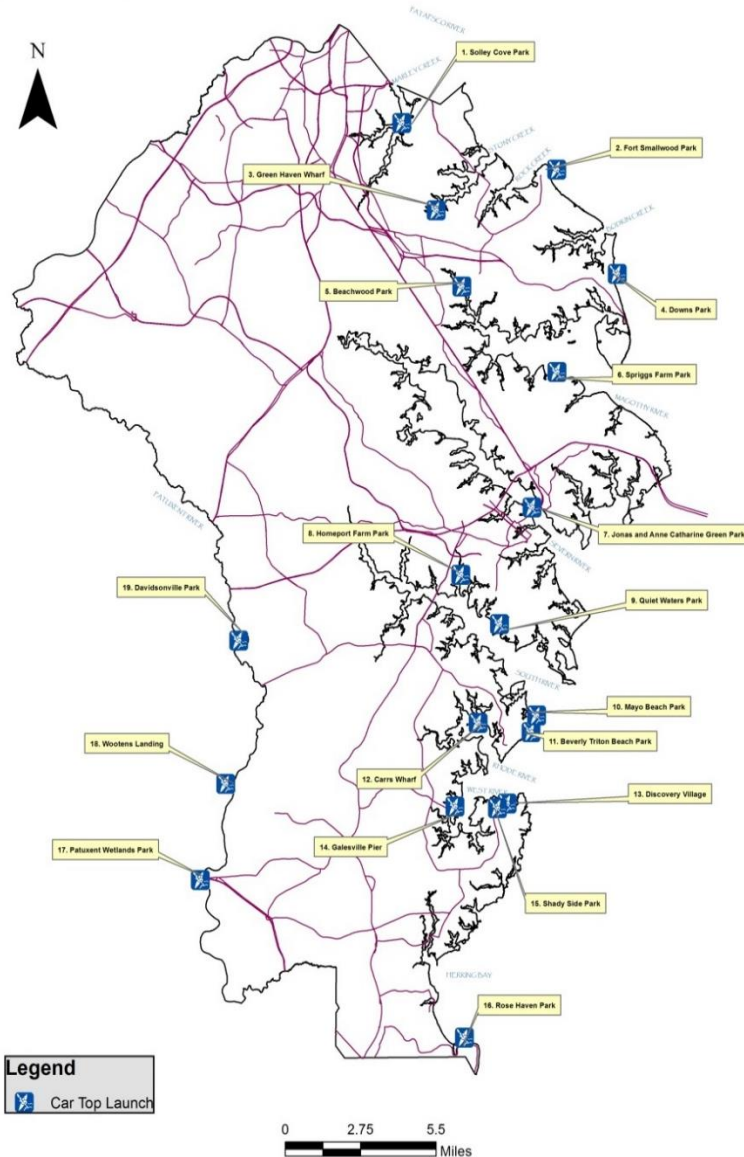


Equity Analysis

- Notable gaps:
 - Annapolis-Parole;
 - Ferndale-Brooklyn Park;
 - North of Fort Meade
 - Glen Burnie and South
 - Laurel-Maryland City
 - Waugh Chapel
- Consistent with proximity analysis, demographics
- Park design addresses needs of aging population



Water Access Sites



1. Solley Cove Park
2. Fort Smallwood Park
3. Green Haven Wharf
4. Downs Park
5. Beachwood Park
6. Spriggs Farm Park
7. Jonas and Anne Catharine Green Park
8. Homeport Farm Park
9. Quiet Waters Park
10. Mayo Beach Park
11. Beverly Triton Beach Park
12. Carrs Wharf
13. Discovery Village
14. Galesville Pier
15. Shady Side Park
16. Rose Haven Park
17. Patuxent Wetlands Park
18. Wootons Landing
19. Davidsonville Park

County Policies Moving Forward: Recreation and Parks

1. Emphasize maintenance and rehabilitation over new development
2. Continue to acquire land and easements for parks, open space, natural resource protection and agricultural preservation
3. Increase water access facilities
4. Address parking deficiencies in existing parks
5. Enhance existing assets rather than developing new assets
6. Prioritize and develop indoor sports facilities
7. Complete the planned regional trail network
8. For new facility locations, emphasize gaps identified by proximity/equity analysis
9. Implement green building and environmental site design technologies
10. Continue to work with public school system on shared use
11. Continue to explore public-private partnerships
12. Continue to address the needs of the County's senior population

Capital Improvement Program Funding

- \$426M over 15 years
- \$28.4M per year
- Grants – 50% of Budget
- Program dollars are consistent with current capital budget
- Our 15 year Capital Improvement Program is consistent with all public recommendations
- Continuous public input will dictate priorities, timetables and funding

The General Development Plan and The Land Preservation Parks and Recreation Plan

- The Land Preservation Parks and Recreation Plan is a living document
- The LPPRP is updated every 5 years
- The GDP recommendations will be incorporated into the 2022 update of the Land Preservation Parks and Recreation Plan